



DIPLOMATIC
HYDRAULICS



K4WA/C

DECELERATION VALVE

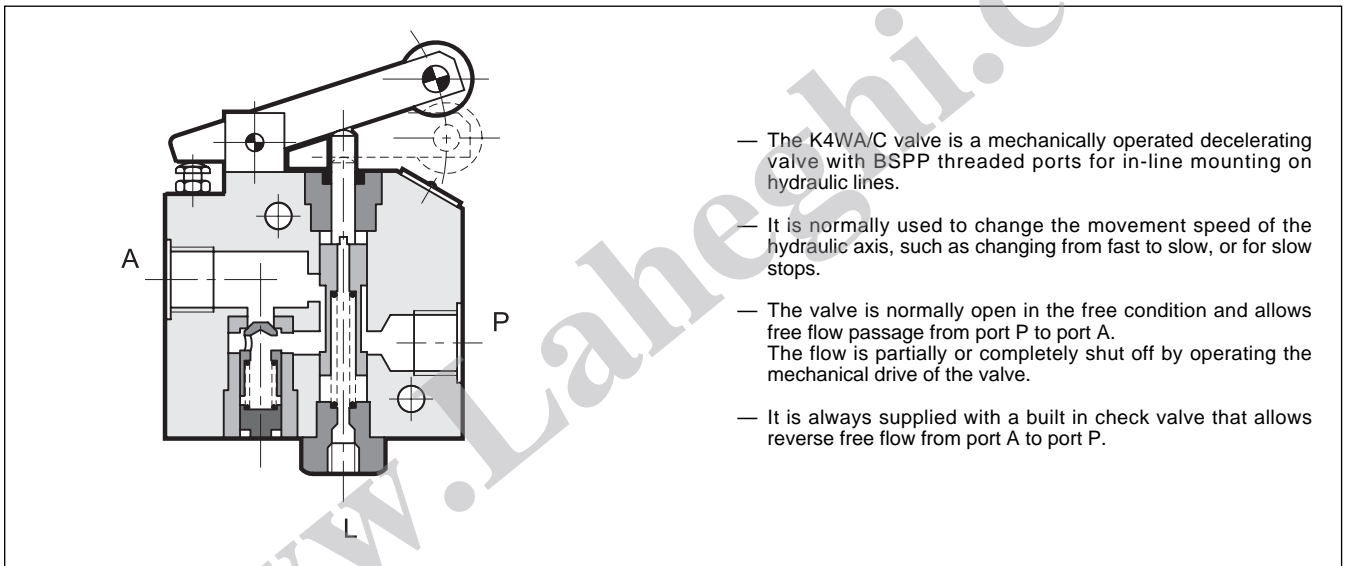
SERIES 10

THREADED PORTS

p max 150 bar

Q max 40 l/min

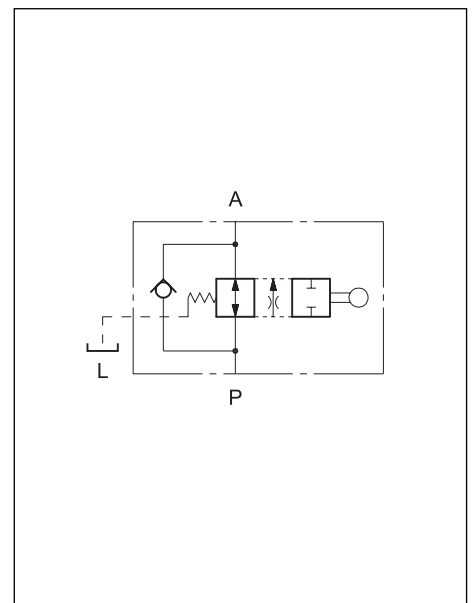
OPERATING PRINCIPLE



PERFORMANCE RATINGS (obtained with mineral oil with viscosity of 36 cSt at 50°C)

Maximum operating pressure	bar	150
Check valve cracking pressure	bar	0,5
Maximum flow rate	l/min	40
Maximum leakage with valve closed (Δp 100 bar)	l/min	0,05
Adj. travel (from compl. open to compl. closed)	mm	20
Ambient temperature range	°C	-20 ÷ +50
Fluid temperature range	°C	-20 ÷ +70
Fluid viscosity range	cSt	2,8 ÷ 380
Recommended filtration	μm absolute	≤ 25
Recommended viscosity	cSt	25
Mass	kg	2,5

HYDRAULIC SYMBOL

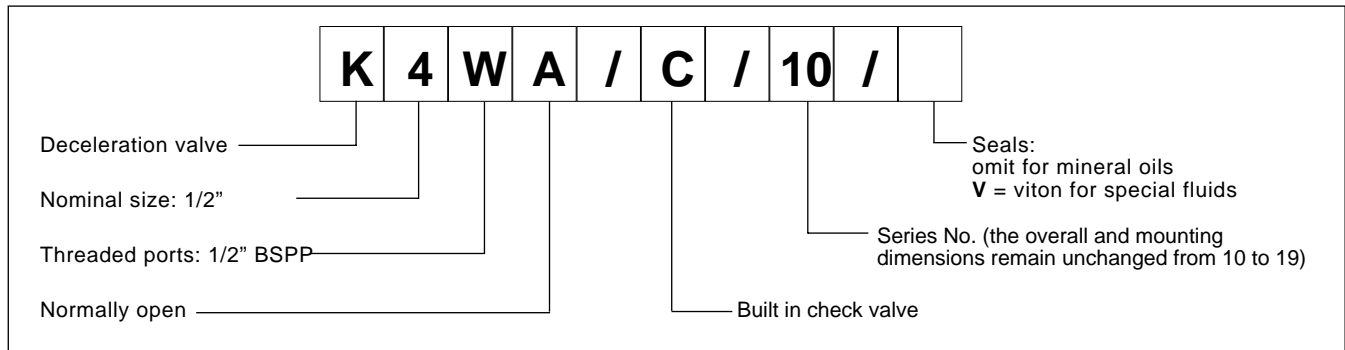




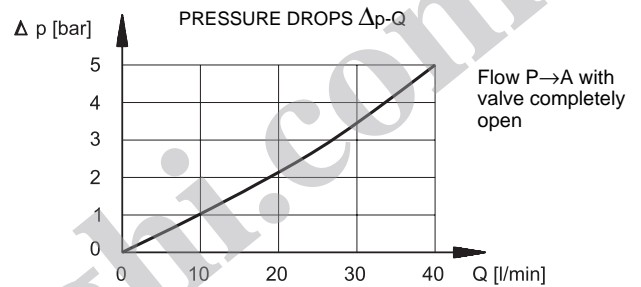
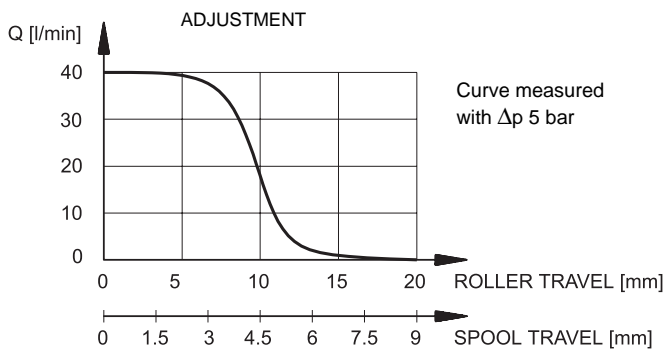
K4WA/C

SERIES 10

1 - IDENTIFICATION CODE



2 - CHARACTERISTIC CURVES (values obtained with viscosity of 36 cSt at 50°C)

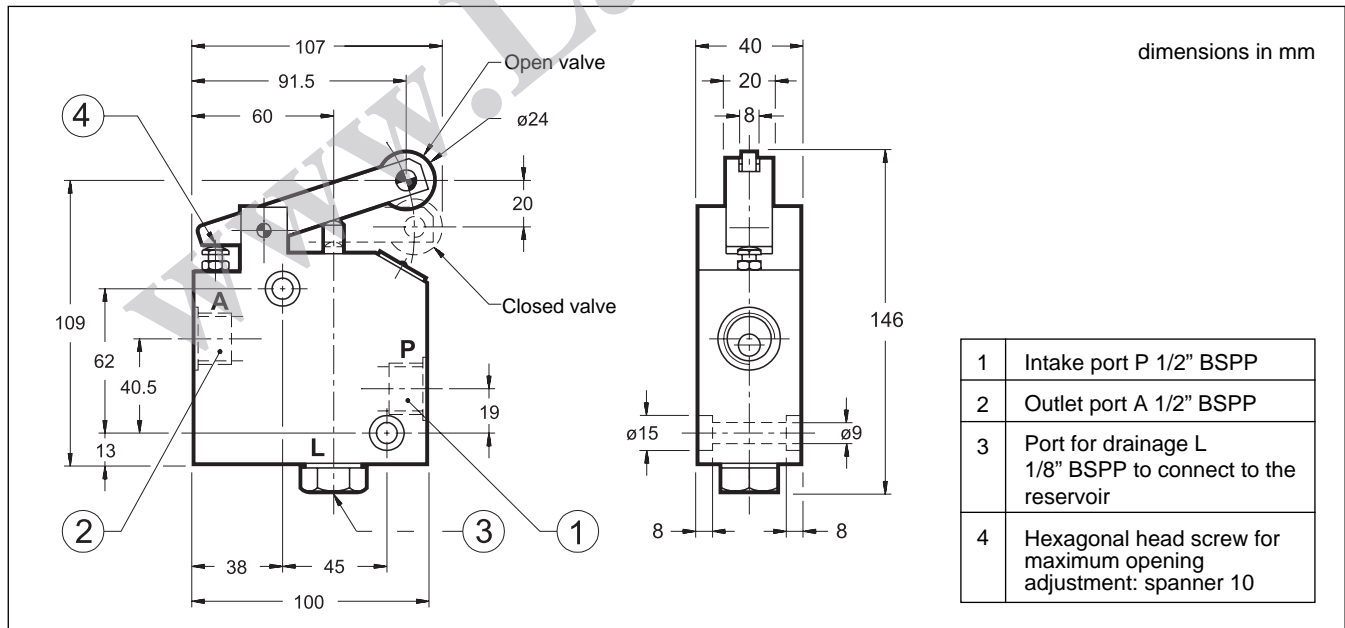


Note: For flow A→P, with valve closed, add the cracking pressure (0,5 bar) to the values shown in the diagram.

3 - HYDRAULIC FLUIDS

Use mineral oil-based hydraulic fluids, with the addition of suitable anti-frothing and anti-oxidizing agents. For the use of other types (water glycol, phosphate esters and others), please consult our technical department.

4 - OVERALL AND MOUNTING DIMENSIONS



DIPLOMATIC
HYDRAULICS

DIPLOMATIC OLEODINAMICA SpA

20025 LEGNANO (MI) - P.le Bozzi, 1 / Via Edison
Tel. 0331/472111-472236 - Fax 0331/548328